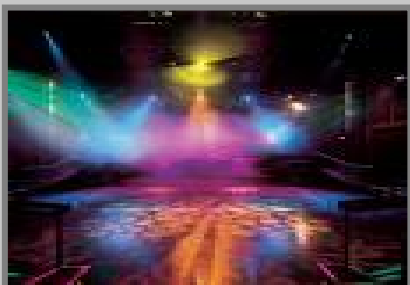




THE LONDON HIPPODROME

Besides its prime location in the heart of London, this versatile venue has a lot to offer. It presents an ideal canvas for your corporate or private event to be as simple or as extravagant as you like.



This venue first opened as a theatre in 1900. It progressed throughout the decades becoming the "Talk of the Town" in 1957. Many famous artists have performed here. It eventually re-opened as a night club in 1983, and re-launched as "Cirque" with a show-stopping celebrity party in 2004.

With red, black and gold decor, the Hippodrome contains a magnificent interior. The venue provides a mechanical stage with a secret stage reveal platform, dance floors, a set of balconies each with its own bar and much more.

Capacity: 1855 people

Inn or Out Ltd, Unit 6 Discovery Business Park,
St James's Road, London SE16 4RA

www.inn-or-out.com 020 7726 0510

© Inn or Out Limited